

# NEWSLINE

THE NEWSLETTER OF THE LINEAR COLLIDER COMMUNITY

## FEATURE



## The year 2014 – The real starting year of the ILC?

by Rika Takahashi

With the creation of a new ILC Planning Office this week at KEK, the Japanese high-energy physics community is taking another big step towards making the ILC a reality in Japan. It is the pre-step for forming an international organisation, which KEK Director General Atsuto Suzuki would like to establish.

## AROUND THE WORLD

### From KEK: KEK sets up Planning Office for the International Linear Collider



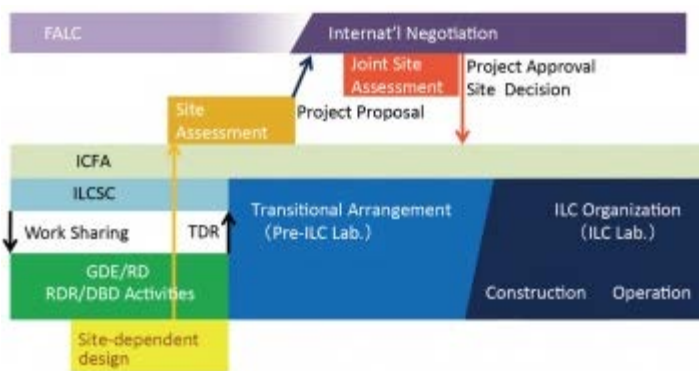
Tsukuba, 6 January 2014. KEK, Japan's High Energy Accelerator Research Organization, has set up a Planning Office for the International Linear Collider. The office will be headed by Atsuto Suzuki, Director General of KEK, and will oversee a broad range of activities required for realisation of the ILC, in addition to the ongoing efforts.

[Read more in English](#) - [Read more in Japanese](#)

## DIRECTOR'S CORNER

### Now open: the Planning Office for the International Linear Collider to realise the ILC

by Akira Yamamoto



I am pleased to be in charge to provide the Director's Corner in timely manner and coinciding with a public announcement from KEK. KEK has set up a Planning Office for the International Linear Collider, headed by Atsuto Suzuki, Director General of KEK. It may serve as a precursor for an international planning organisation for the ILC, in the preparation phase starting after the Technical Design Phase completed.



## Support around the Kitakami site

The Kitakami region in the north of Japan in Iwate prefecture is a potential site for the ILC in Japan, as recommended by the ILC site evaluation committee of Japan on 23 August 2013. And the region is clearly proud of this recommendation. The towns that would be the neighbours of the ILC if it was built there boast banners on official buildings and billboards along the roads, local shops have small banners on their tills, hotel clerks wear fan buttons and taxis sport bumper stickers – all in support of the ILC. Pictured are an advertising column outside Ichinoseki station and a banner at Mizusawa-Esashi station in the city Oshu. Read more about the field trip of the communications team to the Kitakami site in upcoming issues of *LC NewsLine*.

[View other photos](#)

## IN THE NEWS

from *Tagesanzeiger*

6 February 2014

[Physiker planen bei Genf neuen gigantischen Beschleuniger](#)

Der Ring der Ringe, 100 Kilometer lang und Kosten im zweistelligen Milliardenbereich: Ein neuer Beschleunigerring soll viermal so gross wie der jetzige werden. Und was wird damit angestrebt?

from *Tanko Dairy*

5 February 2014

[広報スタッフが視察 周知へアイデア示す](#)

一行は水沢VLBI観測所敷地内の奥州宇宙遊学館で、地元でのILC誘致関係者らと懇談。国際会議やシンポジウムを北上山地周辺で開催し、研究者らに候補地周辺の様子を直接見てもらう機会にできるといったアイデアも示された。(LC communicators met and discussed with local officials who are working on ILC promotion activities at the science museum located in the Mizusawa VLBI Observatory. They proposed several ideas such as having international conferences or symposiums at Kitakami area to provide the opportunity to see how it would be to live in this area)

from *Kahoku Shinpo*

4 February 2014

[ILC広報担当が現地視察 北上山地の魅力発信へ](#)

ILCの建設実現に向け、コミュニケーターの3人が3日、北上山地を視察した。今後、広報誌やインターネットなどを通じ北上山地の現状、魅力を世界に発信する。(LC Communicators visited Kitakami mountain, the candidate construction site for the ILC on 3 February. They are planning to report their visit on the web publication)

**from Iwate Nippo**

4 February 2014

**ILC実現へ知事が11月めどに渡仏 欧州に理解訴え**

達増知事は11月をめぐりに、フランスを訪問する方針を固めた。東日本大震災からの復興支援への感謝を伝えるとともに、ILCの北上山地建設実現に向けた取り組みを欧州各国に理解してもらうことなどが狙い。(Iwate Prefecture's governor, Tatsuya Tasso announced his plan to visit European countries to express his appreciation for the help for the major earthquake in March 2011, and also to foster the understanding on the activity to invite the ILC to Kitakami mountain)

**from Iwanichi online**

4 February 2014

**生活上優れた環境 ILC候補地視察の女性3人**

現地を訪れたLCコミュニケーターは、外国人研究者らが生活する上で優れた環境と評価。(LC Communicators visiting the candidate construction site in Iwate prefecture, recognised the area suitable for the living for the foreign researchers.)

**from Iwate Nippo**

4 February 2014

**ILC広報組織が一関視察 商品の英語表記要請**

ILCの広報活動を展開する「LCコミュニケーター」の3人は3日、一関市を訪れ、建設候補地の北上山地(北上高地)や地元のショッピングセンターを視察した(LC Communicators came to Ichinoseki city and visited the candidate construction sites, and local shopping centre.)

**from Iwate Nippo**

4 February 2014

**渡米の知事、ILC誘致活動紹介 南加州人会に協力要請**

訪米中の達増知事は2日(現地時間)、南カリフォルニア在住の本県関係者でつくる南加州人会(馬場信之会長)との交流行事に出席。国際リニアコライダー(ILC)の本県誘致に向けた取り組みを紹介し、協力を呼び掛けた。(Iwate prefecture's governor, Takuya Tasso met the association of people from Iwate prefecture in South California, US, introducing the activity to invite the ILC to Iwate, and asked for the cooperation.)

**from Asahi Shimbun**

4 February 2014

**加速器の広報担当者、一関の候補地を視察**

一関市大東町大原の北上山地の一角にある建設候補地を県の担当者らの案内で視察。夕方には一関市中心部近くの大型スーパーに立ち寄り、買い物など日常生活の状況を見た。(LC Communicators visited the candidate construction site in Ichinoseki city with the officials from Iwate prefecture. They visited the local supermarket, and checked out how the life would be in the area)

**from NTV**

3 February 2014

**国際リニアコライダー建設候補地を視察**

コミュニケーターの3人が、トンネルの建設予定地周辺を視察して歩いた。3人は、一関市内の視察の途中車窓から看板や上り旗でILCの文字を度々目にし、地元でのILC誘致に向けての機運の高さを感じたという。(Three LC Communicators visited the ILC candidate sites in Kitakami area. They saw many of signs or banners from the car window, and felt the enthusiasm for the ILC in the area)

**from Iwate Nippo**

31 January 2014

**岩手県が「科学ILC推進室」設置 国内外へのアピール加速**

岩手県は新年度、庁内に「科学ILC推進室」を新設する。専任組織の設置により県の姿勢を対外的にアピールし、国への働き掛けや科学技術の振興などを進める。(Iwate prefecture is setting up the new office "Science - ILC promotion office" starting from fiscal year 2014. The office will be in charge of making a public appeal on the prefecture's activities towards the invitation of the ILC, and work on the government for further development of the project and promotion of the science)

**CALENDAR**

**Upcoming events**

**CLIC Workshop 2014**  
CERN  
03- 07 February 2014

**ANNOUNCEMENTS**

**Workshop on top physics at the Linear Collider**

A small workshop on top physics at the Linear Collider will be held on 5-6 March 2014 at LPNHE in Paris. Interested colleagues are invited to participate to this workshop.

[Workshop on Top physics at the LC](#)  
LPNHE, Paris  
05- 06 March 2014

[CALICE collaboration meeting](#)  
Argonne, Chicago, IL  
19- 21 March 2014

#### Upcoming schools

[Joint Universities Accelerator School \(JUAS\)](#)  
Archamps, France  
06 January- 14 March 2014

[View complete calendar](#)

## PREPRINTS

### ARXIV PREPRINTS

[1401.8291](#)

The price of being SM-like in SUSY

[1401.7671](#)

A New Look at Higgs Constraints on Stops

[1401.7095](#)

Coherent noise source identification in multi channel analysis

[1401.6698](#)

Associated Production of Higgs at Linear Collider in the Inert Higgs Doublet Model

[1401.6566](#)

Search for supersymmetric baryons near production threshold in terms of the superflavor symmetry

[1401.6302](#)

Higgs Physics at future Linear Colliders – A Case for precise Vertexing

[1401.6114](#)

Planning the Future of U.S. Particle Physics (Snowmass 2013): Chapter 6: Accelerator Capabilities

[1401.6081](#)

Planning the Future of U.S. Particle Physics (Snowmass 2013): Chapter 3: Energy Frontier

[1401.5586](#)

Higgs-dilaton(radion) system confronting the LHC Higgs data

Requests for giving a talk should be addressed to the programme committee ([Keisuke Fuji](#) (KEK), [Wolfgang Hollik](#) (MPP Muenchen), [Didier Lacour](#) (LPNHE Paris) and [Marcel Vos](#) (IFIC Valencia)).

[Visit workshop website](#)

– *The organising committee (Roman Poeschl, Emi Kou, Francois LeDiberder, Francois Richard, Dirk Zerwas, Keisuke Fuji, Wolfgang Hollik, Didier Lacour and Marcel Vos)*

### ALCW14: registration is open

The “Americas Workshop on Linear Colliders” (AWLC14) to be held at Fermilab from 12 to 16 May. The Americas Workshop on Linear Colliders 2014 is the next in the series of regional linear collider workshops with international participation held around the world. The purpose of the workshop is the continued development of the physics case and advancing detector and accelerator designs for a high-energy linear electron-positron collider. This meeting will particularly address the developments for the ILC. The workshop will consist of plenary and parallel sessions as well as meetings of the collaborations involved in the development of linear colliders. You can find more information and registration details at the [workshop web site](#). The deadline for early registration is 4 May.

### International Workshop on Future Linear Colliders 2014 in October

The 2014 International Workshop on Future Linear Colliders (LCWS14) will be held from 6-10 October 2014 by the Vinca Institute of Nuclear Sciences, Belgrade, Serbia.

The workshop will be devoted to the study of the physics cases for future high energy linear electron-positron colliders, taking into account the recent results from LHC, and to review the progress in the detector and accelerator designs for both the ILC and CLIC projects.

## FEATURE

# The year 2014 – The real starting year of the ILC?

Rika Takahashi | [6 February 2014](#)



*KEK's Director General, Atsuto Suzuki talks about his plan with new Planning Office.*

Close to the end of the year 2013, we had [encouraging news](#) for the ILC. On 24 December, the Japanese cabinet released the government budget decision for fiscal year 2014 – which includes an official budget for the International Linear Collider. The amount of the budget is 50 million yen, about half a million US dollars, which might not seem a lot at first glance. However, this budget is highly significant in a symbolical way towards the realisation of the ILC, since this budget represents a qualitative change in the status of the ILC in the Japanese government. It means that the ILC is now recognised as a formal project.

This budget will be used by the Ministry of Education, Culture, Sports, Science and Technology (MEXT) to investigate and analyse the requirements and issues for the realisation of the ILC, and for collecting objective data which serves as the basis for the future governmental decision.

Along with this development at the government level, the Japanese research community is also taking a next step. On 6 February, KEK announced the creation of an office responsible for the ILC project, the ILC Planning Office. The office will be headed by Atsuto Suzuki, Director General of KEK.

KEK has been playing a leading role in research and development efforts for the ILC. “With the national budget officially allocated, the ILC project now needs the driving force to bring forward the project. The new office, the Planning Office for the International Linear Collider, will coordinate and integrate efforts on planning, scheduling, and managing research activities. It will also take care of internal and external cooperation and coordination as well as handling discuss the desirable way to organize future international laboratory, or the way to manage it, the research

activities already going on,” said Suzuki.

The new office is just a section in the KEK organisation, but this is merely a starting point. “I am planning to expand this office to a pan-Japan organisation with a participation of all the researchers and engineers in Japan, and ultimately, make it into an international ILC pre-laboratory,” he said.

Suzuki aims to deepen the industry-academia collaboration, which is currently carried out through the cooperation with the Advanced Accelerator Association Promoting Science and Technology (AAA). “We will have a new facility in KEK towards the industrialisation of the superconducting cavities. The new office is also in charge of the industry-academia collaboration,” said Suzuki.

In addition, the expert panel established under MEXT started their discussions on the issues pointed out by Science Council of Japan last summer, such as scrutinising the cost evaluation or calculating the number of scientists and engineers needed to build the accelerator and facility, or how to distribute the cost internationally.

“With all these developments, I think we can say that the year 2014 will be a real starting year for the ILC as a project,” says Suzuki. They will work on the detailed accelerator design, and issues to manage the international laboratory if it is built in Japan.

Suzuki says, “We will do our best to appeals to relevant counterpart such as OECD to make the ILC project endorsed as an international project under the aegis of an appropriate international organisation like OECD or UNESCO, to solidify the foundation for the government to start the international negotiations as soon as possible.”

February has traditionally been a memorial month for the ILC project. The release ceremony of the Reference Design Report took place in February 2007, and the new organisation for the realisation of the project, the Linear Collider Collaboration, was also established in February in 2013. This new office in KEK may well become another memorial event for “ILC February.”

[ILC GOVERNANCE](#) | [ILC PLANNING OFFICE](#) | [INTERNATIONAL COLLABORATION](#) | [JAPAN](#) | [KEK](#) | [R&D](#)

Copyright © 2014 LCC

Printed from <http://newslines.linearcollider.org>

## Announcement

### KEK sets up the Planning Office for the International Linear Collider

February 6, 2014

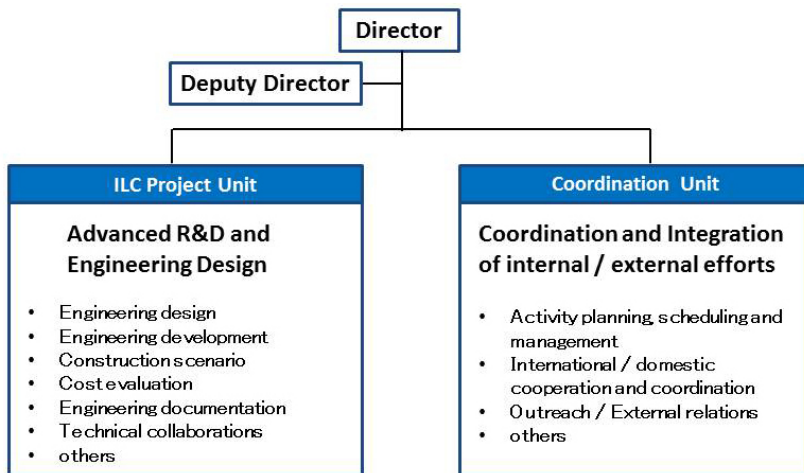
High Energy Accelerator Research Organization (KEK)

Tsukuba, 6 January 2014. KEK, High Energy Accelerator Research Organization, Japan, has set up the Planning Office for the International Linear Collider (ILC), a proposed next-generation electron- positron collider. The office will be headed by Atsuto Suzuki, Director General of KEK.

KEK has been engaged in the global effort on research and development of accelerator and detector technologies for the ILC. This effort at KEK has been coordinated by the Linear Collider Project Office under the department of advanced accelerator technologies.

The new office at KEK will consist of two units: “the ILC Project Unit” and “the Coordination Unit”, and will oversight a broad range of activities required for realization of the ILC, in addition to the ongoing efforts.

The functionality of the LC Project Office will be integrated into the Planning Office for the ILC in steps, and KEK hopes that it serves as a precursor for an international planning organization for the ILC, as incrementally joined by scientists in Japan and from abroad.



#### Background Information:

The International Linear Collider is a proposed next-generation particle collider which will complement the Large Hadron Collider LHC at CERN. It is expected to ultimately lead the scientists to an understanding of the deepest secrets of the universe. The ILC will enable precision studies on the underlying physics of the Higgs boson, the particle responsible for the creation of mass in nature that was discovered at the LHC in 2012.

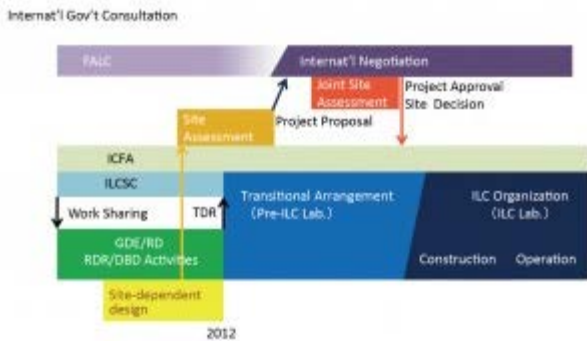
In June 2013, the GDE (the Global Design Effort), a team of international particle physicists, published the Technical Design Report (TDR). The TDR contains all the elements needed to propose the ILC to interested governments, including a technical design and a project implementation plan, that are realistic and have been optimized for performance, cost and risk. The report was signed by 2,400 scientists from around the world.

In August 2013, the ILC site evaluation committee of Japan, a subcommittee under Japan Association of High Energy Physics, after reviewing two candidate sites based on technical and social-environmental criteria, concluded that the Kitakami site in the north of the country is best qualified the as candidate site for the ILC in Japan. With the TDR and the site evaluation report, in October 2013, the Japanese particle physics community filled a petition for the Japanese government to invite the ILC to Japan.

## DIRECTOR'S CORNER

# Now open: the Planning Office for the International Linear Collider to realise the ILC

Akira Yamamoto | [6 February 2014](#)

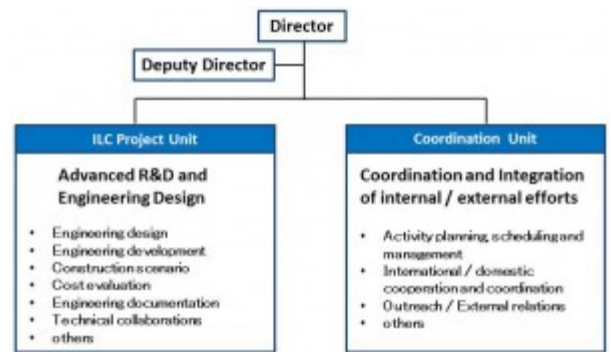


Possible roadmap towards the realisation of the ILC

and will oversee a broad range of activities required for the realisation of the ILC, in addition to the R&D efforts that are already going on. The functionality of the current "LC Project Office", of which I am in charge, is to be integrated into the ILC project unit of the Planning Office this year. I am pleased that our activities may receive a boost to prepare for the ILC to be realised. The main efforts will be to extend Asian cooperation as well as global cooperation. I would like to thank in advance the Asian and global collaborators to encourage us to work together.

I am pleased to be in charge to provide the Director's Corner in timely manner and coinciding with a [public announcement from KEK](#). KEK has set up a Planning Office for the International Linear Collider, headed by Atsuto Suzuki, Director General of KEK. It may serve a precursor for an international planning organisation for the ILC, in the preparation phase starting after the Technical Design Phase completed (see roadmap).

The new office at KEK will consist of two units: the "ILC Project Unit" and the "Coordination Unit" (see organisational chart)



Organisation chart of the newly established Planning Office for the ILC

[ILC PLANNING OFFICE](#) | [ILC R&D](#) | [KEK](#)



## IMAGE OF THE WEEK

### Support around the Kitakami site

6 February 2014

The Kitakami region in the north of Japan in Iwate prefecture is a potential site for the ILC in Japan, as recommended by the ILC site evaluation committee of Japan on [23 August 2013](#). And the region is clearly proud of this recommendation. The towns that would be the neighbours of the ILC if it was built there boast banners on official buildings and billboards along the roads, local shops have small banners on their tills, hotel clerks wear fan buttons and taxis sport bumper stickers – all in support of the ILC. Pictured are an advertising column outside Ichinoseki station and a banner at Mizusawa-Esashi station in the city Oshu. Read more about the field trip of the communications team to the Kitakami site in upcoming issues of *LC NewsLine*.



Banner outside the Shinkansen station in Oshu city. Image: ILC



Advertising column outside Ichinoseki station. Image: ILC



ILC mini-banner at Kawasaki Roadside Station. Image: ILC

[ILC SITE](#) | [KITAKAMI SITE](#)

Copyright © 2014 LCC

Printed from <http://newsline.linearcollider.org>